



// About Us

In Gujarat and Maharashtra, the cell site preparation works sector of Cadillac Connect has given new life to the old niche and is today serving many clients in both states.

A lot of good wishes and encouragement from satisfied clients led to establishment of Cadillac Connect to help the team to perform their job well. The company diversified its activities after it arrived in an important place in the cell site preparation sector. Additionally, the clientele grew to include renowned banks, software firms, and cell phone carriers, for which we played a key role in quickly delivering the essential infrastructure.

Our primary services include supply, erection, testing and commissioning of following:

ISP works, Wifi installation, Small cell Indoor/Outdoor, ODSC installation.

Electrical works. (AMF panels, Equipment shelter internal wiring and special earthing works, All type of Electrical works)

Civil works. (All type of tower foundation works, Construction works, Generators foundation, etc.)

Pipeline Layout Infrastructure.

Telecom Implementation works.

Towers, Poles, Mounts, Fibers, Cable trays supply, Frt services & Erection works and Other fabrication works related to site.

EB Laisoning works.

Solar solutions, Wind solutions.

// Our Mission

Our goal is to offer complete building services in all essential sectors using best and accepted practices. But for particular jobs, We also provide tailored & customized services on demand. Our attention and commitment are the same whether it is a turnkey project or otherwise, and our goal is to guarantee client satisfaction through our skills and force. The motivation behind our efforts is the quality management of essential services.

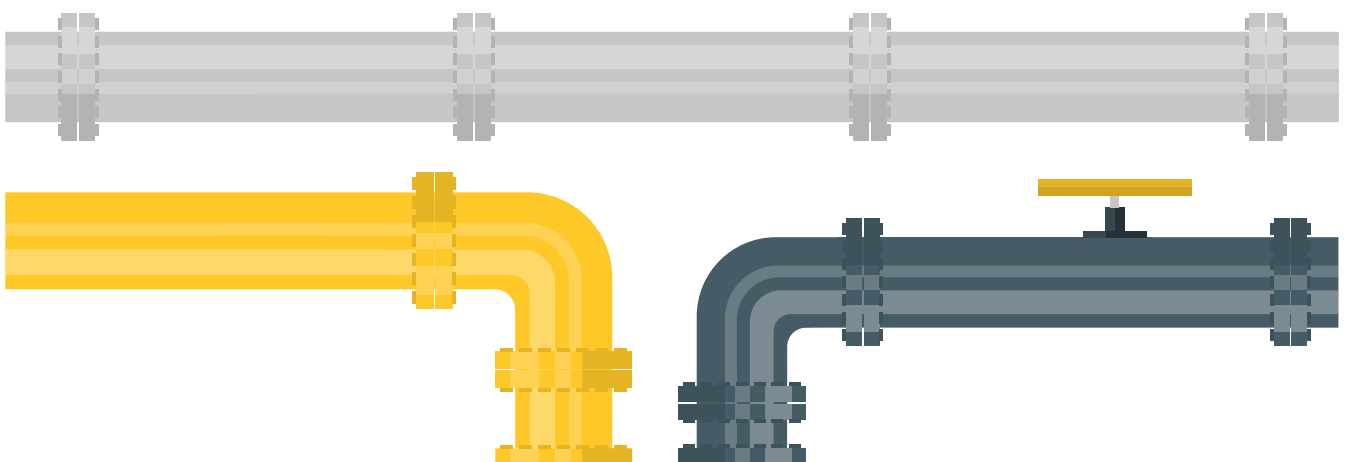
Furthermore, Cadillac Connect also offers top-notch services that can support the needs and fulfils the potential of businesses in the GSM sector through its well-trained and experienced team when it comes to the application of new technologies to consumers.



Pipeline infrastructure

We specialize in Pipeline Laying, offering comprehensive services encompassing erection, testing, and commissioning of Oil & Gas Pipelines, City Gas Distribution Projects, and Operation and Maintenance (O & M) Services. Our operations revolve around three primary business lines: (i) Cross Country Pipelines and associated facilities; (ii) City Gas Distribution including CNG Stations; and (iii) Operation & Maintenance of CNG/PNG services.

We take pride in our track record of successfully executing numerous projects from inception to completion, with ongoing commitments to our clients. Our commitment to timely project execution, coupled with a focus on quality and customer satisfaction, distinguishes us as a leading player in the Pipeline Infrastructure sector.



MANAGEMENT

Our management team comprises seasoned professionals with extensive technical, operational, and business development expertise. Their collective experience and industry insights empower us to capitalize on current and future market opportunities effectively. We attribute our success to the dedication and consistent efforts of our employees, whose unwavering commitment drives our company forward.

QUALITY ASSURANCE

Quality is ingrained in our organizational ethos, with our personnel dedicated to upholding rigorous standards at all times. Our quality control system adheres to internationally recognized Quality Management and Assurance Standards, ensuring that our operations consistently meet project requirements.

Our Quality Control / Quality Assurance Program involves a multifaceted approach, deploying a specialized team including the Project Manager, Project Superintendent, Field Superintendents, Crew Foremen, Project Engineer, and Purchasing Manager. This collaborative effort ensures meticulous documentation and accurate testing procedures, maintaining stringent qualification records.

QUALITY POLICY

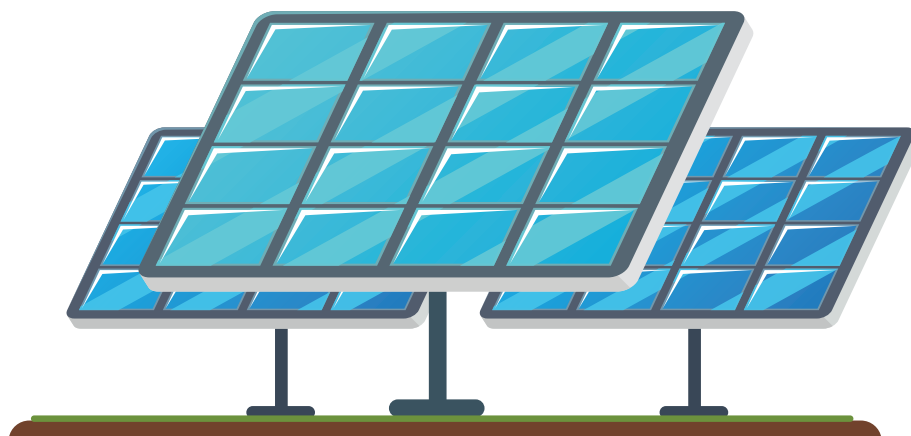
We are unwavering in the commitment to delivering superior Quality Services at the realm of oil & gas pipeline laying and associated works. We pledge to meet customer requirements while adhering to regulations, striving for excellence and customer satisfaction at every turn.

To achieve this, we continually enhance our technical capabilities, invest in state-of-the-art facilities, provide ongoing training, and cultivate a dedicated workforce. Our relentless pursuit of competitiveness drives us to deliver quality services consistently, while our commitment to process improvement ensures sustained excellence in performance, upheld through regular reviews of our Quality Management System.

/ Solar Solutions



We are experts in offering end-to-end solutions to our clients in the following solar segments across India, with a minimum 5-year service warranty. Delivering good and authorised quality products is our primary emphasis in the rapidly growing solar sector. We guarantee the uninterrupted operation of our products for a defined time period. In the Indian Solar Market, we work with a number of reputable vendors.



GRID-TIED SOLAR SYSTEMS

A appropriate inverter is always needed to link grid-connected PV systems to the public electricity grid since photovoltaic panels or arrays (many PV panels) can only produce DC power. A grid-connected PV system, as opposed to a stand-alone PV system, includes the following extra components, in addition to the solar panels:

- **Inverter:** The most critical component of any grid-connected system is the inverter. The inverter takes as much DC (direct current) power from the PV array as feasible and transforms it into clean mains AC (alternating current) electricity at the appropriate voltage and frequency for feeding into the grid or serving individual loads. The primary considerations in grid linked inverter selection are: Electricity is the maximum amount of high and low voltage power that the inverter can handle. Efficiency - How well the inverter converts solar electricity to alternating current.
- **Electricity Meter:** The electricity metre, also known as a kWh metre, is used to track the flow of power to and from the grid. Twin kWh metres can be utilised, one to indicate the amount of electrical energy used and the other to record the amount of solar electricity delivered to the grid. A single bidirectional kWh metre may also be used to show the net amount of power used from the grid. A grid-connected photovoltaic system will slow or stop the aluminium disc in the electric metre, possibly causing it to spin reverse. This is commonly known as net metering.
- **AC Breaker Panel and Fuses:** With the exception of extra breakers for inverter and/or filter connections, the breaker panel or fuse box is the standard type of fuse box given with a domestic electricity supply and installation.
- **Safety Switches and Cabling:** As long as there is sunshine, a photovoltaic array will always provide a voltage output, hence it must be easy to detach it from the inverter for upkeep or testing. Separate isolation switches rated for the maximum DC voltage and current of the array, as well as inverter safety switches with simple access to disconnect the system, must be supplied. Other safety elements that the electrical company may need include earthing and fuses. Electrical wires used to link the various components must be properly rated and proportioned as well.
- **The Electricity Grid:** In order for a PV system to be considered a grid-connected system, the electrical grid itself must be connected as well.

Additionally, we also provide hybrid and off-grid solutions.

Wind Solutions



The services that our company provides to clients include windmill erection. We are involved in the installation of a wide range of turbines and have extensive industrial expertise. We have a team of qualified specialists that install these turbines according to the needs of the clients. Our services are timely, affordable, and dependable.

WindMill Installation

Repairs & Maintenance

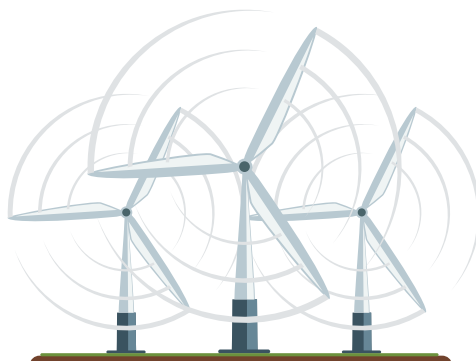
Relocation Services

Reducing O & M cost

Reducing system reliability

Speed upto 300mph.

Cost effective and reliable.





We provide a comprehensive range of Civil Construction Services with the ongoing backing of our skilled staff. These services are provided in line with the industry's current trends and standards. To provide these services, we employ high-quality fundamental materials and modern procedures.

Choice of Technology and Construction Method

Site investigation and Laboratory tests

Planning, Design and engineering services

Management control

Conditions of the contract

Project administration

Licensing-in of process

Procurement and expediting of equipment

Cost control

Control of schedule and quality

Construction processes and operations

Quality management

Health, Safety and the Environment

Inspection of equipment prior to delivery

Field Services

STRUCTURAL WORKS

Structural engineers operate in both offices and on building sites, or they may alternate between the two. Work may be done in a variety of settings, including cities and rural areas. Depending on the magnitude of the project, structural engineers may be required to work long hours in teams of professionals, skilled labourers, and semi-skilled workers.

BUILDING CONSTRUCTION

We provide our clients with direct access to a team of highly skilled and experienced professionals who provide consultation services in preparatory work, building design, construction management, construction supervision, and maintenance work. Cadillac Connect has worked as an engineering consultant on nearly every form of construction project, including residential dwellings, schools, hotels, sports facilities, offices, industries, hospitals, and health centres.

WAREHOUSE / INDUSTRIAL SHED CONSTRUCTION

We provide a wide range of structural Sheds, backed up by a team of industry-experienced specialists. To achieve the quality criteria, we use quality certified raw materials and high-tech equipment to make these shelters. We can modify these shelters to meet the diverse demands of the engineering and warehousing sectors. The Pre-Industrial Sheds that are provided are frequently utilized for the installation of small and big industrial equipment.

GOVERNMENT CONTRACTS

We provide services in a variety of government contract areas, including RCC road building, footpath construction, paver construction, toilet construction, public benches, and repair and maintenance of all types of civil construction.

Tower Services



Our scope of tower services include cellular as well as broadcasting towers, in which building towers & setting up cellular tower sites to perform maintenance & inspection services are provided according to requirement.

100% Site Installation

Tower Inspections

Tower Construction

Expert Installation

Microwave Installation

All Maintenance

Civil Site Construction

Installation of All Types of Lines and Antennas

Line Testing

Tower ISP and OSP services

Wifi Communication Tower



Fiber Services

Cadillac Connect FTTX Solutions assist in connecting the Internet of Things (IoT) necessary from the Head End/Central Office to the Home, Business, or Multiple Dwelling Unit as Smart Cities and Smart Power grids are deployed. Our solutions assist service providers in achieving optimal performance and reliability for installations in a wide range of settings, including some that were previously difficult to access. As a result, the return on investment in Fiber-To-The-Subscriber (FTTx) networks

FTTx Solutions

FTTx Network Design

Feeder Service Area Design (FSA)

Distribution Service Area Design (DSA)

Customer Service Area Design (CSA)

Operation & Maintenance Services



With a presence in Gujarat and Maharashtra, Cadillac Connect offers Operation & Maintenance Services to complement its core technologies, enabling wireless operators' networks to be accessible 365 days a year, around-the-clock. These services consist of:

24*7 Maintenance and technical support service.

Preventive Maintenance.

Breakdown Maintenance.

Uninterrupted Power Supply.

99.99% Service level Efficiency.

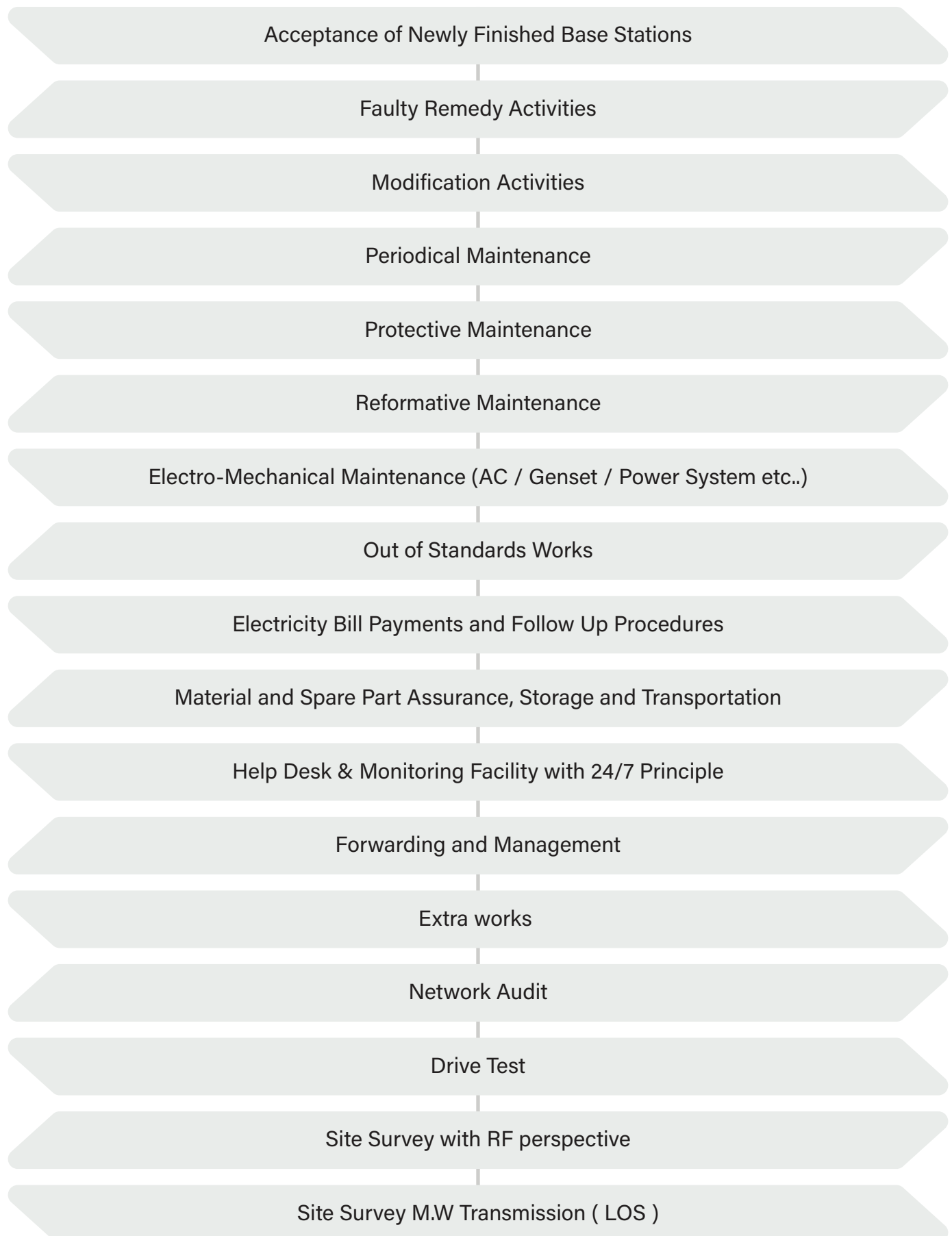
Aesthetic and environment friendly layout and design.

Centralized Fault Management.

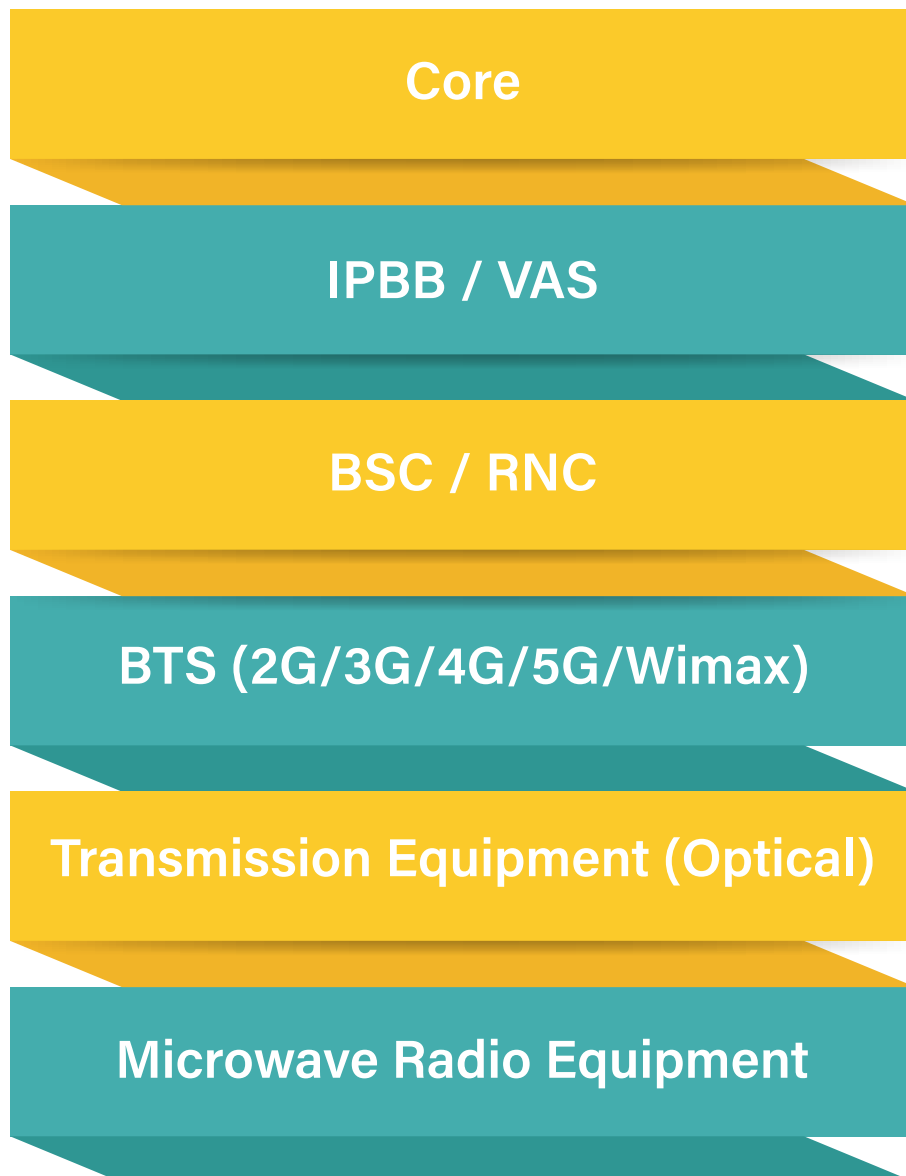
Experienced Management / Engineers / Technicians / Riggers and HR

4x4 cars or vehicles as per the Project Requirements

Operation & Maintenance Solutions



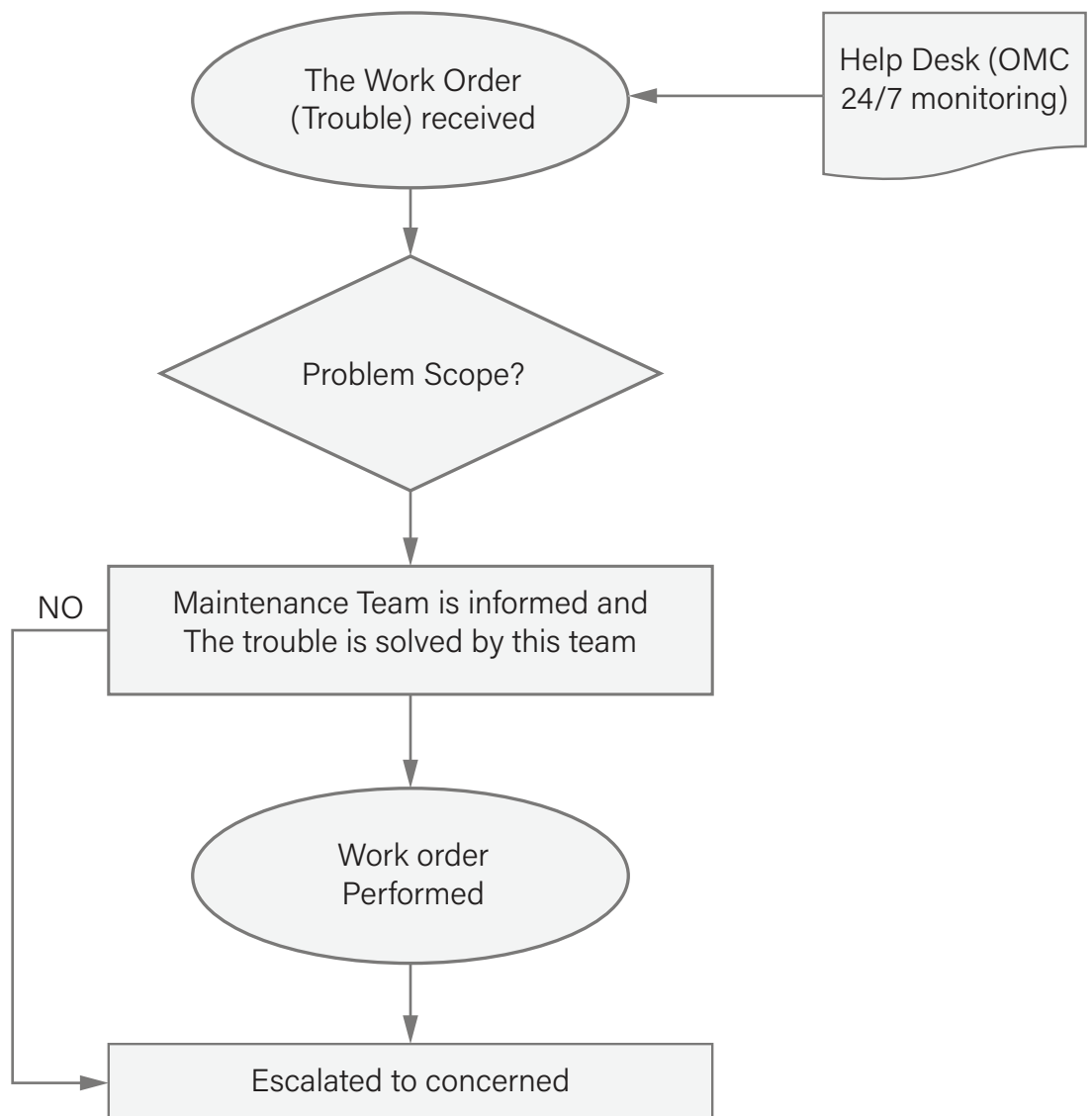
// Site Corrective Maintenance Process



The most important service, fault remedy activity, should be carried out with extreme professionalism.

Knowing this, we can provide operation and maintenance services for the following network components, and possibly more depending on the needs of the customer and the SoW.

Site Corrective Maintenance Decipline



Help Desk, which runs on a 24/7 basis, monitors and receives the warnings, alarms, and maintenance requests and takes the appropriate action accordingly.

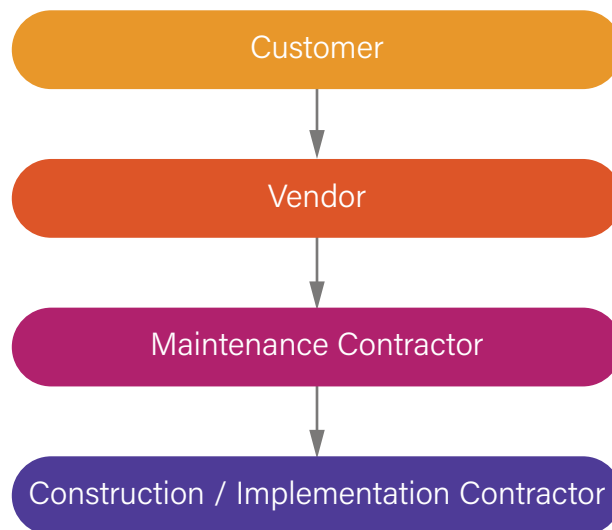
Help Desk notifies the pertinent region's team leader of any fault/failure observed, and ensures that the repair is completed by the specified team within the stated SLA and KPI's.

Help Desk also coordinates planned outage actions.

Upgrades, migration of E1s, configuration changes, or MDTs are given by the client, and the operations are carried out in accordance with the coordination of Help Desk Management and O&M Manager.

Site Acceptance Service & Process

The Provisional Acceptance is carried out in the presence of the following parties:



The acceptance is then completed using pre-determined check lists, and relevant documentation with images and are delivered to the customer on time.

After a predetermined period, the final acceptance is carried out, and acceptance forms and paperwork are signed by all parties if everything is in order according to the requirements of the client.

NETWORK AUDITING SERVICES

Network audits can be undertaken at the request of the client, like:

- ✓ GSM Antenna electrical and mechanical tilt values & changes
- ✓ Antenna height
- ✓ M.W antenna size and height
- ✓ Link type / Capacity
- ✓ LoS Survey

// Team Structure

Each squad typically consists of two persons (1 Engineer, 1 Rigger&Driver)

Each team is normally just in charge of their assigned number of locations and region.

Each team will be in charge of preventative and remedial maintenance.

Our customers are invited to conduct interviews with our engineers.

MAIN TOOLS LIST

- ▶ Portable Laptops
- ▶ BER Tester
- ▶ Site Master
- ▶ Multi Meter
- ▶ Optical power meter
- ▶ Portable tool kits.
- ▶ Camera (Digital)
- ▶ Safety belts.
- ▶ Required software (Vendor Specific).
- ▶ Dust cleaners
- ▶ Cable cutters
- ▶ Special tool to make IF connectors
- ▶ GPS
- ▶ All the other necessary equipments and tools necessary to perform the project.



// Documentation

All data acquired by Corrective and/or Preventive maintenance teams, including (Alarms, Screen photos, panoramas, event logs), will be sent to the O&M Manager. And the O&M Manager will be responsible for delivering this information/reporting to the client on a weekly basis, with the frequency of reporting determined according to the customer's needs.

All spare components shall be recorded by the Warehouse Responsible and reported to the O&M Manager through regular inventory reports.

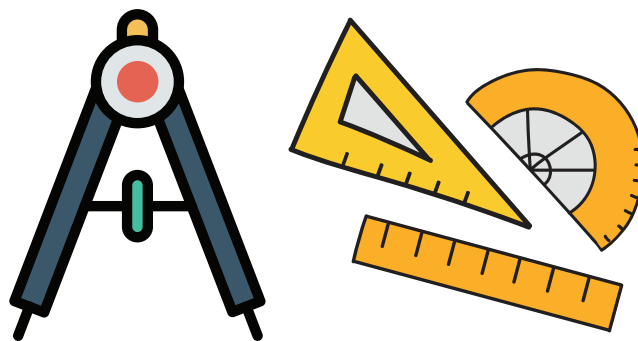
On a daily basis, the help desk will generate their own daily reports and deliver them to the O & M Manager. As a result, the O&M Manager will be informed of any issues and will be available to the client and/or its representatives at any time.

Weekly routine reports are provided to the customer.

If there are any deviations from the SLA, a separate record shall be kept.

NOTE: The frequency of reporting can be adjusted to meet the demands of the customer.

// Calibration Of The Devices



Calibration of equipment is performed by authorised firms according to the prescribed periods and time intervals, since it is one of the most significant factors in obtaining accurate measurement data.

Logistic Manager monitors the calibration period of the equipment and reports it to the O&M Manager on a regular basis so that the appropriate measures may be taken.

// Warehousing & Logistics

All electrical equipment used in the projects is housed on appropriate shelves in an air-conditioned environment to safeguard it from dampness, severe heat, and so on.

All electrical equipment is carried to the sites in its original packaging or antistatic bags.

Inventory control and warehouse stock management are frequently checked. The delivery reports for every type of goods coming in or leaving out are collected, and the essential track database is closely adhered to by the Warehouse / Logistic Manager.

// Gps Vehicle Tracking System



A GPS tracking device can be fitted in FM team cars to track the FM Engineer's position. This can estimate the site's arrival time, such as $RT2 \Rightarrow RT3$, and will provide us and our customers with a clear picture of the time the team departs for debugging, minute by minute.

Team control: Teams will be more aware of SLA needs.

Time control : The site will be recovered in the shortest possible period.

NETWORK SUPPORT & MAINTENANCE

An entire information system strategy can be constructed on the foundation of a structured cabling system. From concept to implementation, the skilled and devoted team of Cadillac Connect provides a 'end to end' solution. We design and construct cable infrastructure systems that support a variety of phone, data, video, and multimedia systems. We will assist you in evaluating, designing, and installing the best integrated solution for your business. We deliver high-quality infrastructure cabling to ensure that your networks function at maximum wire speed and have the best possible availability.

Services provided by Cadillac Connect Structured Cabling include:

Systems analysis and design

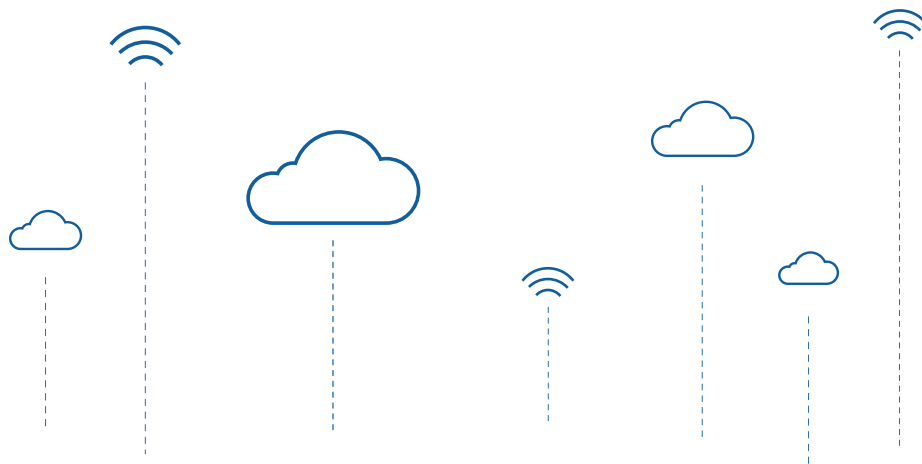
Cat 6 & Cat 6A structured cable

Integrated voice and data cabling

Moves and changes to existing installations

WIRELESS SOLUTION

To ensure that their consumers are always covered, wireless systems need a seamless network. Our Systems collaborates with clients to develop and deploy the optimal wireless solution depending on unique requirements, whether they are for office buildings, hospitals, college campuses, or hotels. Our customers receive a complete solution that provides the finest wireless coverage thanks to our integrated approach that spans design, installation, and maintenance. Eighty percent of all calls start and conclude inside a structure, with the user presuming to have good mobile capabilities. It improves regions to have the best reception and productivity, impacting premium experience and market price, as well as maintaining hotel occupancy, by implementing an in-building cellular solution.

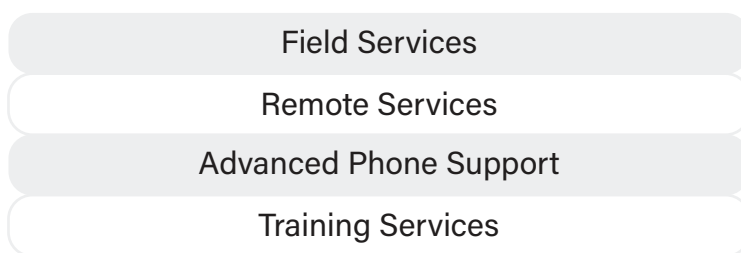


CCTV

As security systems get more sophisticated, it takes a significant amount of effort and training to competently design and maintain these intricate, integrated video management solutions.

We are pleased to provide Professional Services to support our resellers. This is an excellent chance to boost sales and provide more clients with video security services. By using our market-leading solutions to safeguard the end user's vital investment, our potent fee-based service programme for Commerce resellers offers an excellent option to boost your organization. Allow our solutions to assist you in succeeding.

Our Professional Services



SPECIAL MODIFICATION REQUESTS

Every installation and every customer, as Cadillac Connect is aware, has a special set of needs that may necessitate specialized solutions. To accommodate these requirements, we have a programme called Special Modification Requests (SMR). Our SMR programme enables integrators and dealers to offer powerful, differentiated solutions to customers, regardless of whether the customization is motivated by aesthetics or the environment. From retrofitting new products into existing installations to adapting products to special environmental requirements, our SMR programme offers market-leading Cadillac Connect products to fit specialized applications.



Our corporate service provides for the needs of the company, its clients, and its staff. Our corporate clientele spans the whole sector, from product makers to product sellers to enterprises in concierge services to real estate websites to hotels, restaurants, salons, gyms, and bars.

Regular visits from Carpenters, Electricians, and Plumbers are required for property maintenance. Through a corporate partnership, we can ensure that the personnel you've approved visit your property when you need them to. We know your consumer doesn't want to wait around for the air conditioner to be serviced any longer, therefore we give our business clients a special service with a 30-minute TAT. We spare you the trouble of looking, haggling, and following up.


CONTACT US


Our goal is to offer complete building services in all essential sectors using best and accepted practices. But for particular projects, there are also options that are manufactured per demand. Our focus and commitment are the same whether it is a turnkey project or otherwise; we want to use our expertise and competence to guarantee customer satisfaction. The motivation behind our efforts is the quality management of essential services.

Address for Correspondence:

Cadillac Connect Pvt. Ltd.

24, Sitaram estate,
Near Mony Hotel, Isanpur,
Ahmedabad – 382443.

 (+91) 99040 40619

 info@cadillacconnect.in
www.cadillacconnect.in

